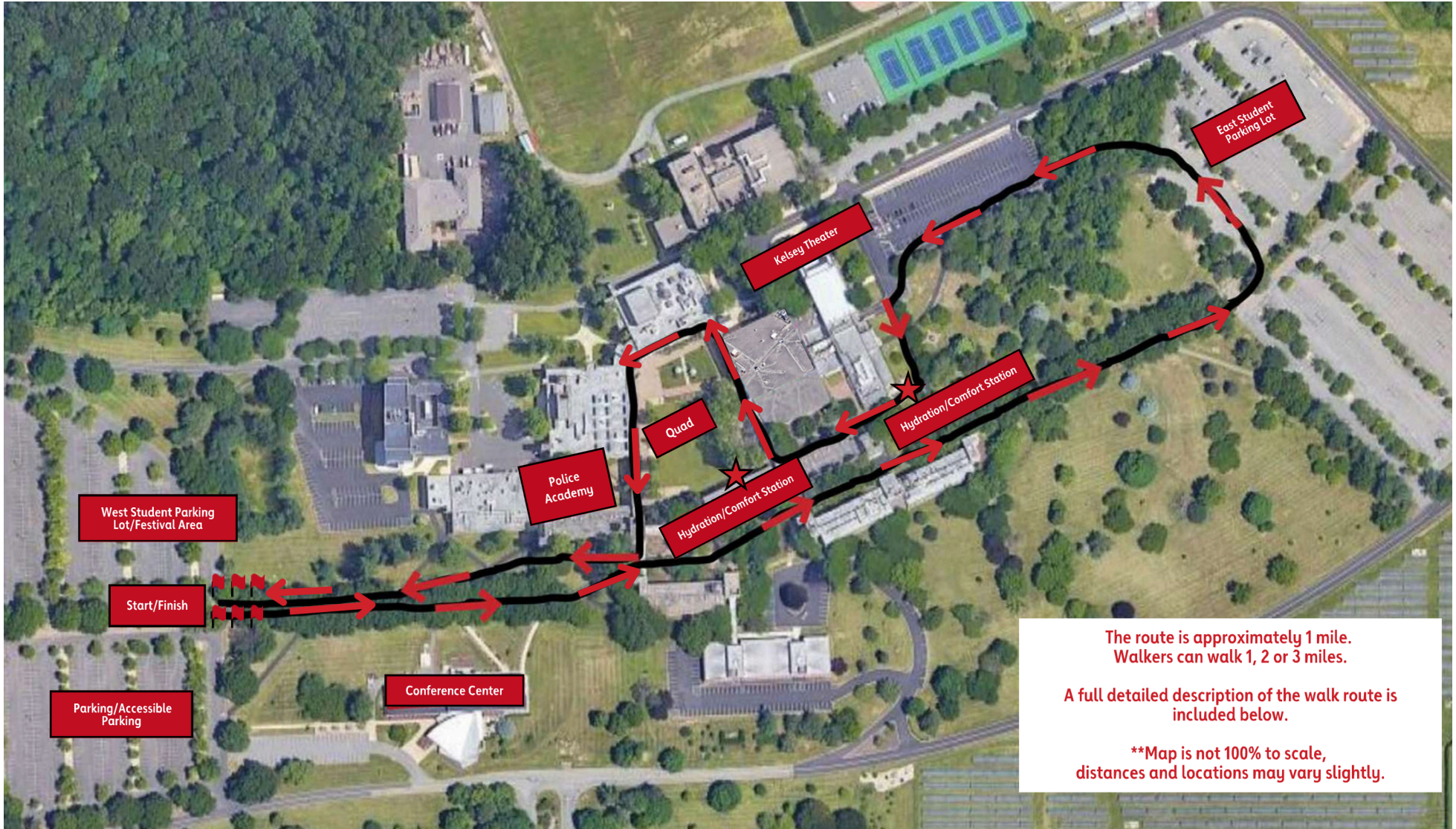




2024 Central NJ Heart Walk Mercer County Community College West Windsor Township, NJ Walk Route Map



The route is approximately 1 mile.
Walkers can walk 1, 2 or 3 miles.

A full detailed description of the walk route is included below.

**Map is not 100% to scale, distances and locations may vary slightly.



2024 Central NJ Heart Walk
Mercer County Community College West
Windsor Township, NJ Walk Route
Instructions

Note that the walk will begin and end in the same place - the red feather flags at the beginning of the walking path on the eastern side of the west student parking lot.

1. Begin at the red feather flags on the eastern side of the west student parking lot at the walking path.
2. Walk in an eastern direction following the path approximately 761 feet until the path curves slightly north east. You will pass the Conference Center on your right about 400 feet from the starting point.
3. Continue to follow the path northeasterly (about 2,150 feet from the start line) until the path curves west around the inside perimeter of the east student parking lot.
 - o At about 1,100 feet from the start line, you will pass a hydration station and comfort station on your left.
4. Continue to follow the path westerly until it curves south west (continuing on the inside perimeter of the east student parking lot). The distance is about 2,541 feet from the start line.
5. Continue southwest about 2,962 feet from the start line. You will see the Kelsey Theater diagonally to your right.
6. At this point, follow the slight southern curve of the path (at about 3,000 feet from the start line). At the end of this path, make a left.
7. Walk in a southern direction until the path ends and make a left. This is about 3,385 feet from the start line.
 - o At this point, you will pass a hydration station and comfort station on your left.
8. Continue west until you see the quad on your right. This is about 3,723 feet from the start line.
9. Turn right, in a northern direction to enter the quad.
10. Walk in a northern direction until you get to the end of the quad, then make a left. This is about 4,030 miles from the start line.
11. Continue west to the other corner of the quad, about 4,211 feet from the start line.
12. At this corner of the quad, turn left in a south direction and continue around the perimeter of the quad. This is about 4,500 feet from the start line.
 - o At this point, you will see a hydration station and comfort station on your left. This is the same one you passed when you began the route.
13. At the end of the quad, continue south an additional 112 feet and make a right onto the same path you walked up at the beginning of the walk. This is about 4,612 feet from the start line. The Police Academy will be on your right hand side.
14. Continue west back toward the starting point. Once you return to the red feather flags, you will be approximately 1.03 miles from where you started.

The route is approximately 1 mile. Walkers can walk 1, 2 or 3 miles.

Questions or Concerns?

Call Adam Miller 484-401-2512