



American Heart Association.

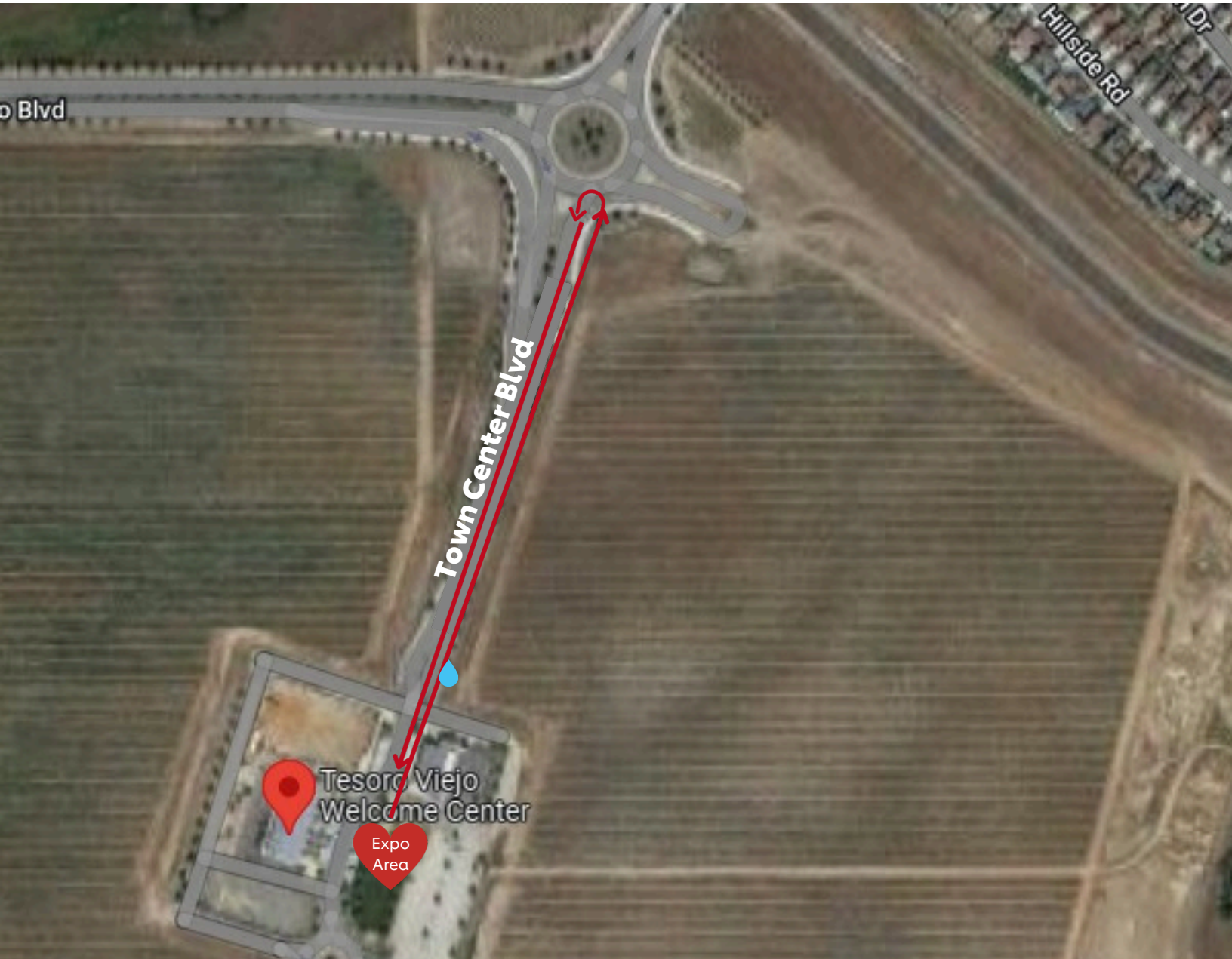
Heart and Stroke Walk™



Central Valley Heart and Stroke Walk

1/2 Mile Survivor Route

Tesoro Viejo 4150 Town Center Blvd #101, Madera, CA 93636



The survivor route departs the Tesoro Viejo Welcome Center and travels up Town Center Drive up toward the roundabout and loops back down Tesoro Viejo Blvd. walking on the sidewalk back towards the Welcome Center.

If you have any questions or need assistance contact:
Nayeli.Munoz@heart.org