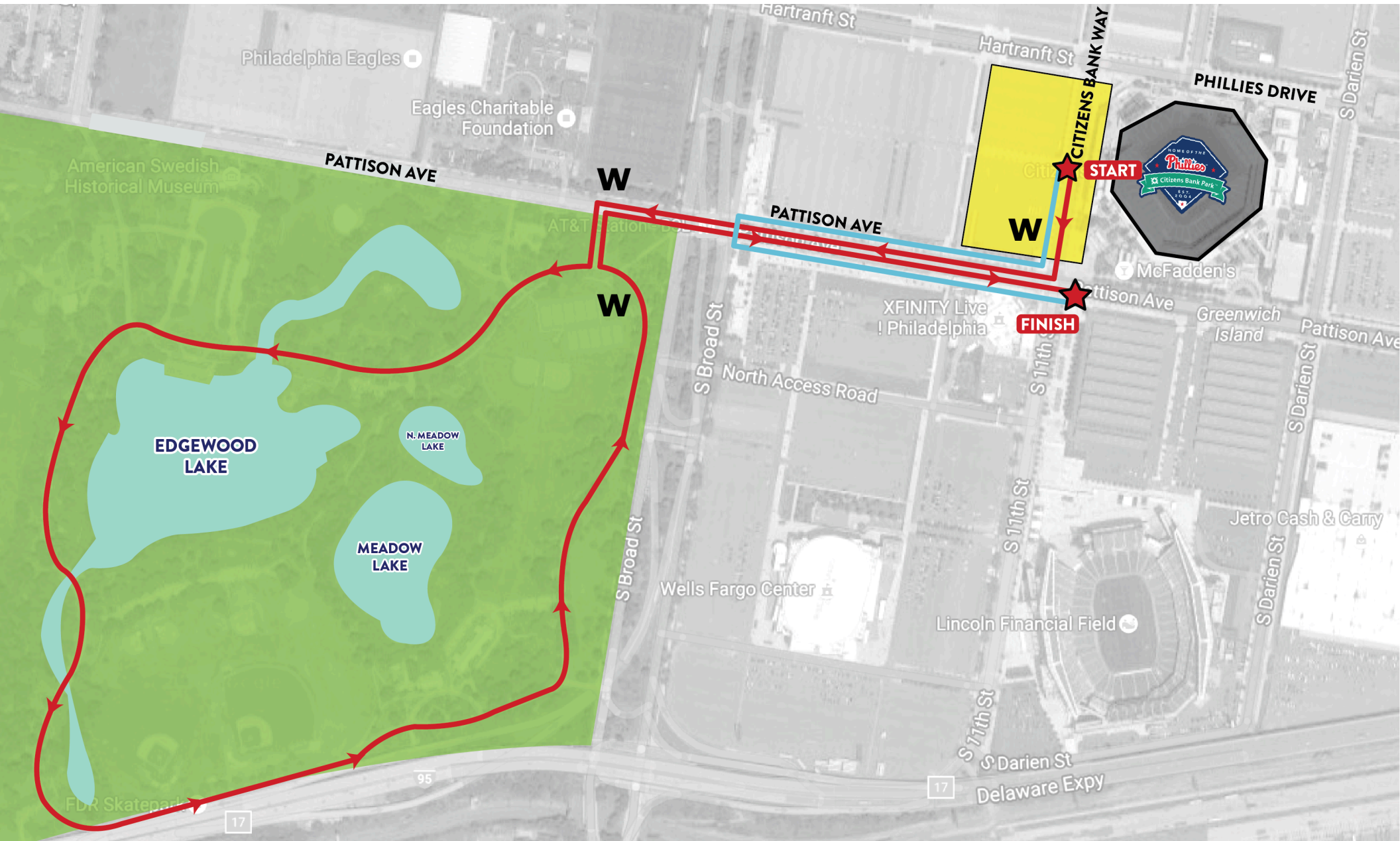


Philadelphia Route Map



W Water

 Festival Area

 Miracle Mile

 5K Route

 Start/Finish

Route Description

1. The start line is located halfway down Citizens Bank Way near Lot S in between Left Field Gate entrance and Third Base Gate entrance.
2. Walkers will walk straight on Citizens Bank Way and make their way down the street.
3. Walkers will pass the first water station on Citizens Bank Way.
4. Walkers will turn right on Pattison Ave.
5. Walkers will approach the Miracle Mile halfway point on Pattison Ave. Walkers participating in the Miracle Mile will turn around and follow directions back to the American Heart Association Arch on Pattison Ave and Citizens Bank Way to symbolize the finish line.
6. Walkers will continue on Pattison Ave, passing the second water station before FDR Park.
7. Walkers will then turn left into FDR Park.
8. Walkers will continue straight on the Lake Loop around FDR Park.
9. Walkers will pass the third and final water station before exiting FDR Park.
10. Walkers will exit FDR Park and make a right onto Pattison Ave.
11. Walkers will continue down Pattison Ave.
12. The American Heart Association arch will be on Pattison Ave and Citizens Bank Way to symbolize the finish line.

If you need assistance, or have any questions, please contact:

Miles McCaskey

miles.mccaskey@heart.org

