



American
Heart
Association.

American Heart Association.



go red

2026 Greater Hartford

GO RED FOR WOMEN LUNCHEON

March 19, 2026

As women, our greatest resource is each other!
Let's Go Red, Together!

WELCOME

Dear Go Red for Women Luncheon Attendees,

It is truly an honor to serve as Chair of this year's Go Red for Women Luncheon. I am deeply grateful to stand alongside such a passionate community committed to advancing heart health for women everywhere.

My connection to this mission is personal. Twenty-five years ago, I lost my father to heart disease — a loss that continues to shape my commitment to this lifesaving work. It is a powerful reminder that the fight against cardiovascular disease touches every family and every generation.

As a woman and a proud mom of three daughters, I am especially passionate about the importance of women supporting women — both personally and professionally. When we lift each other up, share knowledge, and advocate for our health, we create a stronger, healthier future for the women and girls who follow us.

Thank you for being part of this important movement. Your presence, your voice, and your support are helping drive meaningful change.

Together, we will knock heart disease off its pedestal as the number one killer.



2026 Go Red for Women Chair

Caroline Wilke
CVS Health

A Message from Our CEO

Dear Friends,

Welcome to the 2026 Go Red for Women® signature experience. I am delighted that you are here. The energy is electric as we come together again to celebrate and support women's heart and brain health.

As the Go Red for Women movement enters its third decade, we have made extraordinary progress in raising awareness, advancing research and advocating for policies to improve women's cardiovascular health. Yet women continue to be underdiagnosed, undertreated and underrepresented in research.

Now in its seventh year, the Research Goes Red platform engages women in studies exploring solutions for their unique cardiovascular health challenges and needs.

The Go Red for Women Venture Fund invests in companies that are translating science into evidence-based products and services to improve women's health.

Still other initiatives are expanding pathways for women to enter careers in science, technology, engineering and math so they can continue transforming health systems from the inside as decision-makers, researchers and clinicians.

Going Red means so much more than wearing a color. Going Red means coming together, lifting our voices and locking arms to protect the heart and brain health of women across all ages and stages of life.

Going Red means empowering women to know their cardiovascular risk and take action today to ensure a healthier tomorrow.

Thank you for being part of this lifesaving global movement.

All my best,

Nancy Brown
Chief Executive Officer
American Heart Association



AGENDA

Festival of Red

Enter Ballroom for Lunch & Program

Opening Remarks with Emcee

Taylor Regan, News Anchor
NBC Connecticut

CVS /Signify Health

National Sponsor Remarks:

Dr. Heidi Schwarzwald
CMO Signify Health

Campaign Chair

Caroline Wilke
CVS Health

Survivor Ambassador

Linda Heidorn

Keynote Address

Tina Charles

Event Ends

Thank You for Joining Us!



American Heart Association.



YOUR EMCEE



Taylor Regan - News Anchor
NBC Connecticut

Taylor Regan is an Emmy Award-winning anchor and reporter at NBC Connecticut. You can watch her weekday mornings on NBC Connecticut Today from 5 a.m. to 7 a.m. alongside Eddie Randle and Bob Maxon. She previously served as the longtime host of CT Live.

Taylor received her degree in broadcast journalism from American University in 2015. After working as a production assistant for the National Press Club and NBC Sports Washington, she began her television career as an anchor and reporter at WABI TV5, the CBS affiliate in Bangor, Maine. In 2018, she moved to Connecticut and helped launch NBC Connecticut's first lifestyle show, CT Live.

In 2020, Taylor was named one of Hartford Business Journal's "40 Under 40", recognized for her work highlighting local businesses impacted by COVID-19. In addition to her passion for storytelling, Taylor is actively involved in the community, serving as a volunteer and mentor for Best Buddies Connecticut.

In her spare time, you'll likely find Taylor, a self-proclaimed 'foodie', trying out a new local restaurant or on a never-ending quest to find the best cup of coffee in Connecticut. She also enjoys hiking and discovering the beautiful trails across our state.

go red

Follow the American Heart Association! @HeartCONN



YOUR KEYNOTE

Tina Charles



Tina Charles is one of the most dominant centers in women's basketball history and a powerful advocate for community health and safety. A three-time Olympic gold medalist and former WNBA MVP, Charles has built a legendary professional career as the league's career leader in made field goals, total rebounds, and double-doubles, while ranking second all-time in scoring.

While her dominance on the court has defined an era of women's basketball, Charles' impact off the court has become equally meaningful through her work with the Hopey's Heart Foundation, which she founded in 2013 in honor of her late aunt, Maureen "Hopey" Vaz. The foundation works to raise awareness about sudden cardiac arrest and improve emergency preparedness by placing life-saving Automated External Defibrillators (AEDs) in schools, recreation centers, and community organizations across the country.

In 2025, Charles reached a major milestone when Hopey's Heart distributed its 500th AED, a testament to more than a decade of dedication to heart health education and prevention. The foundation remains family-run, with Charles and her loved ones deeply involved in its outreach, fundraising, and education initiatives. Through Hopey's Heart, Charles has also organized sports safety clinics, community health events, and awareness campaigns focused on protecting young athletes.

Her work has earned widespread recognition, including the WNBA's Dawn Staley Community Leadership Award, which honors players who demonstrate extraordinary commitment to service and community impact. Charles is a two-time recipient of the award, first winning it in 2012 early in her career and again in 2025 as a veteran leader whose advocacy has continued to expand.

Beyond her foundation work, Charles is also a filmmaker and storyteller. In 2019, she founded 100th St Films and premiered her first documentary, *Charlie's Records*, at the Tribeca Film Festival. She later followed with *Game Changer* in 2021, a film she directed and produced highlighting women in gaming.

A proud New Yorker who also celebrates her Jamaican heritage, Charles continues to use her platform to uplift communities and inspire the next generation, building a legacy that goes far beyond the basketball court.

2026 EXECUTIVE LEADERSHIP TEAM



CAROLINE WILKE, Chair
CVS Health



KATY CARRILLO, STEM Chair
Stanley Black & Decker



AMY CRAFA, Auction Chair
Nutmeg State Financial
Credit Union



DEBBIE DENNO, Circle of Red Chair
MahoneySabol



SHEILA AZOR
Eversource



JOCELYN DEMAIO
The Hartford



ELIZABETH DEVITO
Hartford Steam Boiler



JENNIFER GERASIMOV
Deloitte



CLAUDIA NORMAN
CVS Health



JAMIE PETRIASHVILI
iTech Solutions



DR. STEPHANIE SAUCIER
Hartford Hospital



LAURA SCHUNTERMANN
Cigna



HALEY SOFIANE
CareCentrix



LORETTA STEVENS
Competitive Edge
Branding



STACEY VENETTA
CBIA

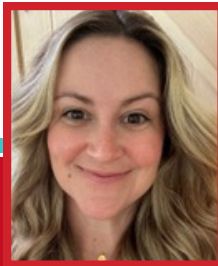


WOMAN OF
IMPACT

**2026
WOMAN OF IMPACT
NOMINEES**



Jennifer Berry
Evernorth Health



Tricia Chase
Hartford Hospital



Shari Ann Madho
Legal Advocates

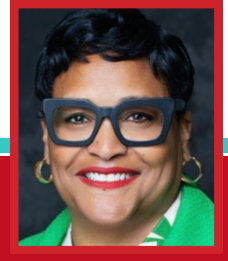
HARTFORD



Nicole Batista
FCP Euro



Maria Marcinek
Heart Survivor/AEPMI



Katherine Tucker, RN
City of New Haven

NEW HAVEN



Circle of Red®

We are united in purpose.
We have opened our hearts.
We share our influence.
We are the Circle of Red.

What is the Circle of Red Society?

The Circle of Red is a society of women who are in the fight against heart disease to win. Located in communities throughout the United States, Circle of Red members use their influence, generosity and ambassadorship to help increase awareness of heart disease - the leading cause of death for women - and to inspire women to take charge of their heart health.

When you join Circle of Red, you'll team up with other passionate leaders in your community who are on a mission to flatline heart disease. You'll attend special events and VIP experiences where you'll learn, lead and advocate for heart health. You'll mentor students. You'll raise funds for lifesaving science and community-changing programs. You'll be a catalyst for real, positive change for women's heart health in your community and beyond.

Please join today!

For more information contact Bethany Pelletier, Go Red Development Director at, Bethany.Pelletier@heart.org

Thank you to our Circle of Red members:

Jennifer Berry	Russ & Mena Mills
Maureen Boyle	Claudia Norman
Katy Carrillo	Dr. Joyce Oen-Hsaio
Jocelyn DeMaio	Dr. Meghana Rao Brito
Deborah Denno	Dr. Stephanie Saucier
Elizabeth DeVito	Haley Sofiane
Jennifer Gerasimov	Richard Taikowski
Adria Giordano	Laura Terranova
Francine LoRusso	Dr. Ayanna Walker
Geri Lyons-Bell	Wheatley Wentzell
Maria Marcinek	Caroline Wilke
	Dr. Stuart Zarich

Cor Vitae *Society*

Cor Vitae, Latin for heart of life, is the American Heart Association's annual giving society of individuals whose generous commitments are helping to change and save lives.

Rosanna & William Andrulat
Thomas Barnes
Jennifer Berry
Joseph M. Brito Jr.
Maureen Boyle
Katy Carrillo
Dr. Keith B. Churchwell
Dr. Leslie Douglas-Churchwell
Ross Evans
Lou Gianquinto
Joost Gieskes
Steven Horowitz
Joan Kindred
Gerri Lyons-Bell
Francine LoRusso
James Mahoney
Maria & Mike Marcinek
Russell & Filomena Mills
Patricia Pac
Gina & Prisco Panza
Sue & Jay Quimby
Dr. Meghana Rao Brito & Joseph Brito, III
Janine Sadoski
Haley Sofiane
Pamela Sutton-Wallace
Christopher Swift
Dawn Tyler
Dr. Eric Velazquez
Mrs. Maureen Velazquez
Sterling & Pamela Viets
Wheatley Wentzell
Caroline Wilke

THANK YOU TO OUR GO RED SPONSORS

Go Red for Women is nationally sponsored by



Go Red for Women is locally sponsored by



All American Waste
Deloitte
Hartford HealthCare
Hartford Hospital
LAZ Parking
MahoneySabol
Nutmeg State Financial Credit Union
Yale New Haven Health

STEM Goes Red is locally sponsored by

StanleyBlack&Decker



The Barnes Group
iTech Solutions
Triumph
UConn Foundation
Yash Technologies

Media Sponsors





Business Supporter

Apex Systems
Conning
Key Bank
Mintz + Hoke
Runnvation



THANK YOU
to our
Festival of Red
Supporters

CVS Health / Signify
DJ Q-Boogie
FemCity
ICF CT

Iris Photography
LimeLife by Alcone
Palm Resort Wear
Roba Physical Therapy



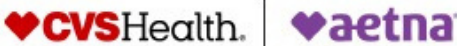
go red



CVS Health and Go Red for Women are fighting back against the No. 1 killer of women.

CVS Health proudly supports the American Heart Association's Go Red for Women® movement as a national sponsor committed to supporting women's heart health at every age and stage by funding lifesaving cardiovascular research and education and supporting community based health initiatives.

Go Red for Women is nationally sponsored by





American Heart Association.

American Heart Association.

American Heart Association.



Research Goes Red™

QUICK ACTION. LASTING IMPACT. JOIN RESEARCH GOES RED

Your story. Your data. Your future.

Women continue to be underrepresented when it comes to research, care and treatment for their No. 1 killer — cardiovascular disease.

Research Goes Red is an initiative by the American Heart Association that engages women across the United States to advance cardiovascular research by sharing their personal health journey.

SCAN TO JOIN



goredforwomen.org/researchgoesred

©2025 American Heart Association, Inc. All rights reserved. Unauthorized use prohibited. The American Heart Association is a 501(c)(3) nonprofit organization. Go Red for Women is a registered trademark of AHA. The Red Dress is a trademark of U.S. GHS.





American Heart Association.

Go Red for Women.
Venture Fund

Closing the Gap in Women's Heart and Brain Health

The odds are stacked against women's health.

Cardiovascular disease is the No. 1 killer of women.

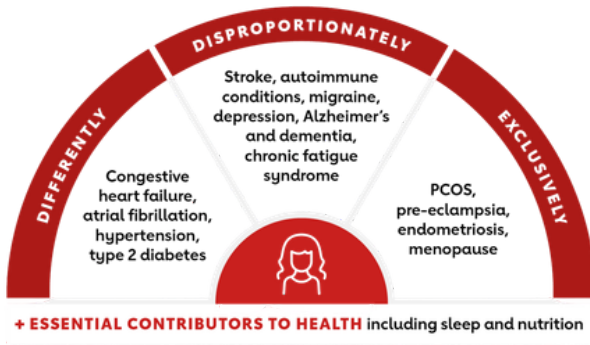
Two-thirds of Americans living with Alzheimer's disease are women.

And 80% of people with autoimmune conditions that damage the heart and brain are women.

Decades of underinvestment led us here.

The Go Red for Women Venture Fund is shifting the paradigm.

We invest in market-driven solutions for heart, brain and related conditions that affect women differently, disproportionately or exclusively.



With your help, we can do more for women, faster.

Together, we can create a world where every woman has the chance of a longer, healthier life.

Reimagine Women's Health with Us





American
Heart
Association.

American Heart Association.



Go Red for Women is nationally sponsored by



© Copyright 2025 American Heart Association, Inc., a 501(c)(3) not-for-profit.
All rights reserved. Go Red for Women is a registered trademark of AHA.
The Red Dress Design is a trademark of U.S. DHHS.
Unauthorized use prohibited. WF536641 8/24